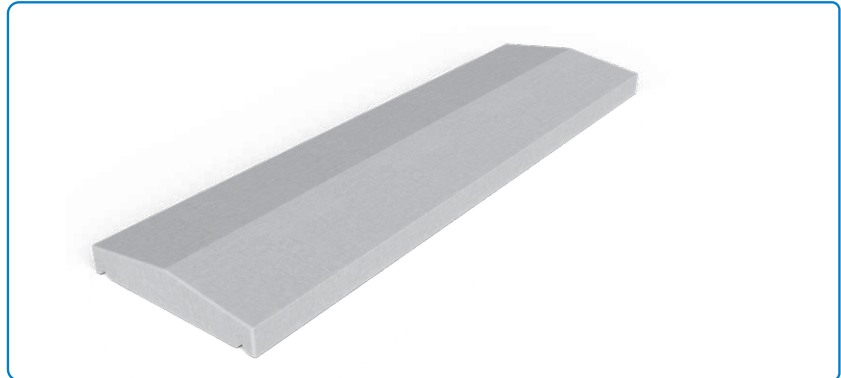


Wall copings

TWICE WEATHERED WALL COPING



MANUFACTURE

- Concrete composition: cement; sand; gravel; water; adjuvant.
- Wall coping made in reinforced concrete.

APPLICATION

Seal the coping to the wall with adhesive mortar or polymer. It is recommended to use adhesive between the copings.

The distance between the wall and the coping edge must be equal or superior to 40mm.

BENEFITS

- Easy to install.
- Durability.
- Aesthetic.
- Available in grey and white.

PRODUCT INFORMATION

Reference	Designation	l x L	Dimensions (mm)				Unit weight (kg $\Delta\pm 5\%$)	Unit / pallet	Wall (mm)	Resistance and exposure class
			e	i	H	h				
CH035	2 weathered wall coping 25	250 x 1000	30	190	60	40	26,5	30	100 ou 150	C25/30, XC1
CH030	2 weathered wall coping 28	280 x 1000	30	220	60	40	30	30	150	C25/30, XC1
CH033	2 weathered wall coping 31	310 x 1000	30	250	60	40	33	20	200	C25/30, XC1
CH034	2 weathered wall coping 35	350 x 1000	30	290	60	40	38	20	250	C25/30, XC1
CH036	2 weathered wall coping 33	330 x 1000	30	270	70	50	46	20	200	C25/30, XC1
CH037	2 weathered wall coping 55	550 x 500	30	490	60	40	31	28	450	C25/30, XC1
CH038	2 weathered wall coping 30	300 x 1000	30	240	100	70	60	14	200	C25/30, XC1
CH039	2 weathered wall coping 46	460 x 1000	30	400	60	40	53	20	360	C25/30, XC1

NB: Product liability is limited to the supplied product quality, and the guarantee ends whenever there's a misuse or a neglected use. All complaints concerning the appearance of the products must be done before application. We remind you that the application means that the product is fine.

