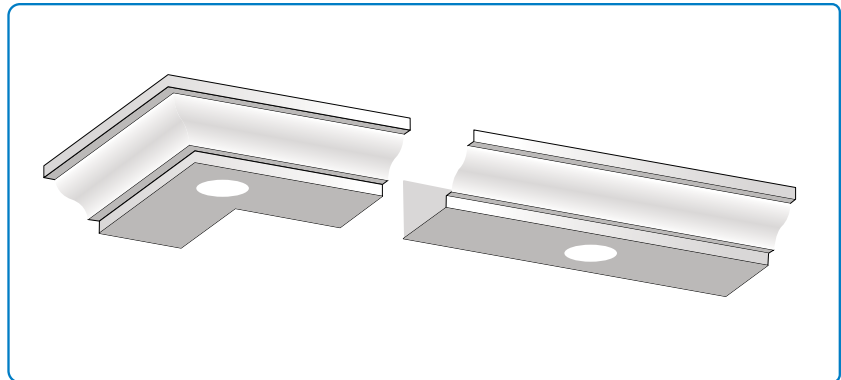


Ceiling finishings

**LIGHT
CORNICE**

For rooftops and beams.



MANUFACTURE

Concrete reinforced with fibres.

APPLICATION

- Check altimetry.
- Begin the application in the corners to create the alignment for the other parts.
- Use mortar to fix the parts.
- The connection to the framework is made every Lm through the specific holes in the cornices.
- Fill in with concrete.

BENEFITS

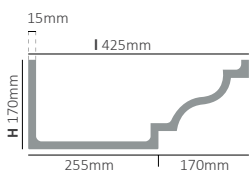
- Light.
- Resistant.
- Easy to handle and to fix.
- Low cost transport and application.
- Aesthetics: several patterns available.

PRODUCT INFORMATION

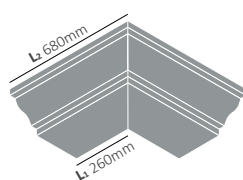
Reference	Designation	Mesures (mm)			Unit weight (Kg/ Δ±5%)	Unit /pallet (un)
		I x H	L ₁	L ₂		
4B 4GR	Straight cornice 4	425 x 170	1000	--	21	30
4B 5GR	Straight cornice 5	520 x 250	1000	--	28	26
4B 9GR	Straight cornice 9	495 x 200	1000	--	25	30
4B CE4GR	Angle cornice 4	425 x 170	260	680	20	--
4B CE5GR	Angle cornice 5	520 x 250	230	750	25	--
4B CE9GR	Angle cornice 9	495 x 200	250	750	20	--

NB: Product liability is limited to the supplied product quality, and the guarantee ends whenever there's a misuse or a neglected use. All complaints concerning the appearance of the products must be done before application. We remind you that the application means that the product is fine.

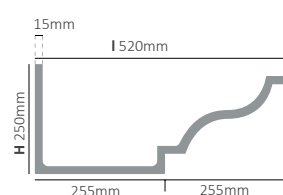
CORNICE 4B 4GR



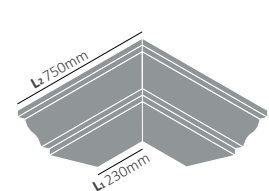
CORNICE 4B CE4GR



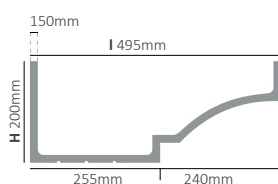
CORNICE 4B 5GR



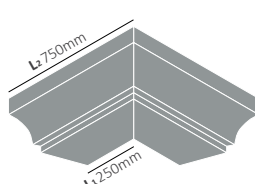
CORNICE 4B CE5GR

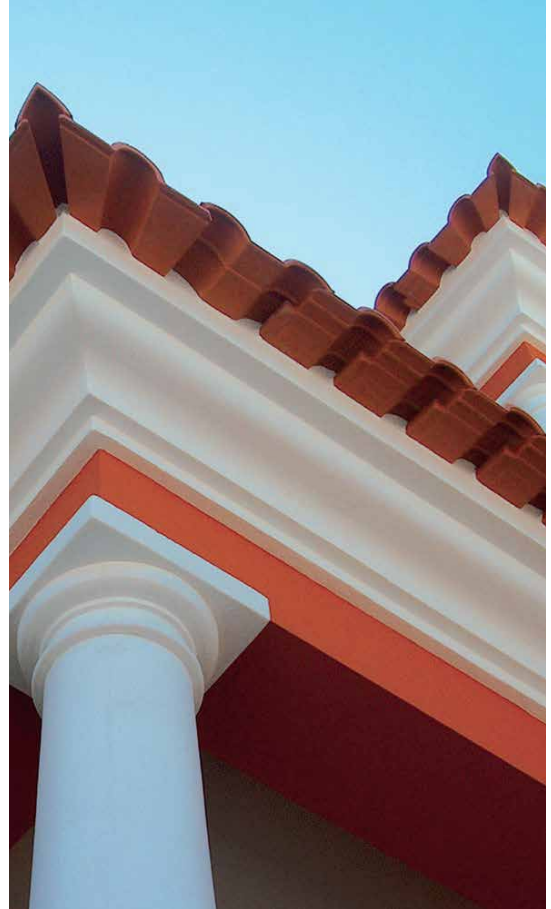


CORNICE 4B 9GR



CORNICE 4B CE9GR





Application

CORNICE APPLICATION

1. The elements must be applied on a leveled base;
2. First, install the angles, because they will serve as a reference for aligning the other pieces;
3. The elements must be fixed with glue;
4. Lay the trellis inside;
5. To finish, fill in with concrete.

